

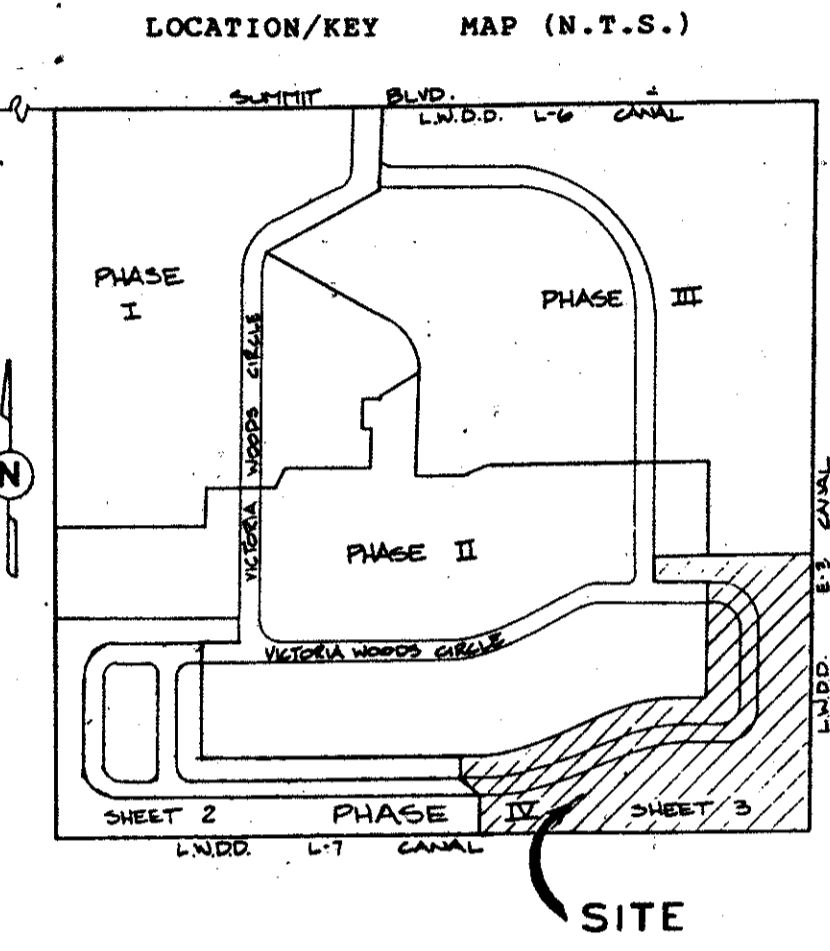
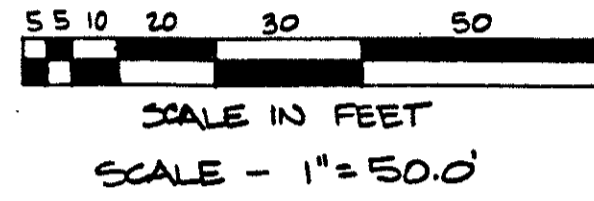
# PLAT FOUR OF VICTORIA WOODS

A P.V.D.

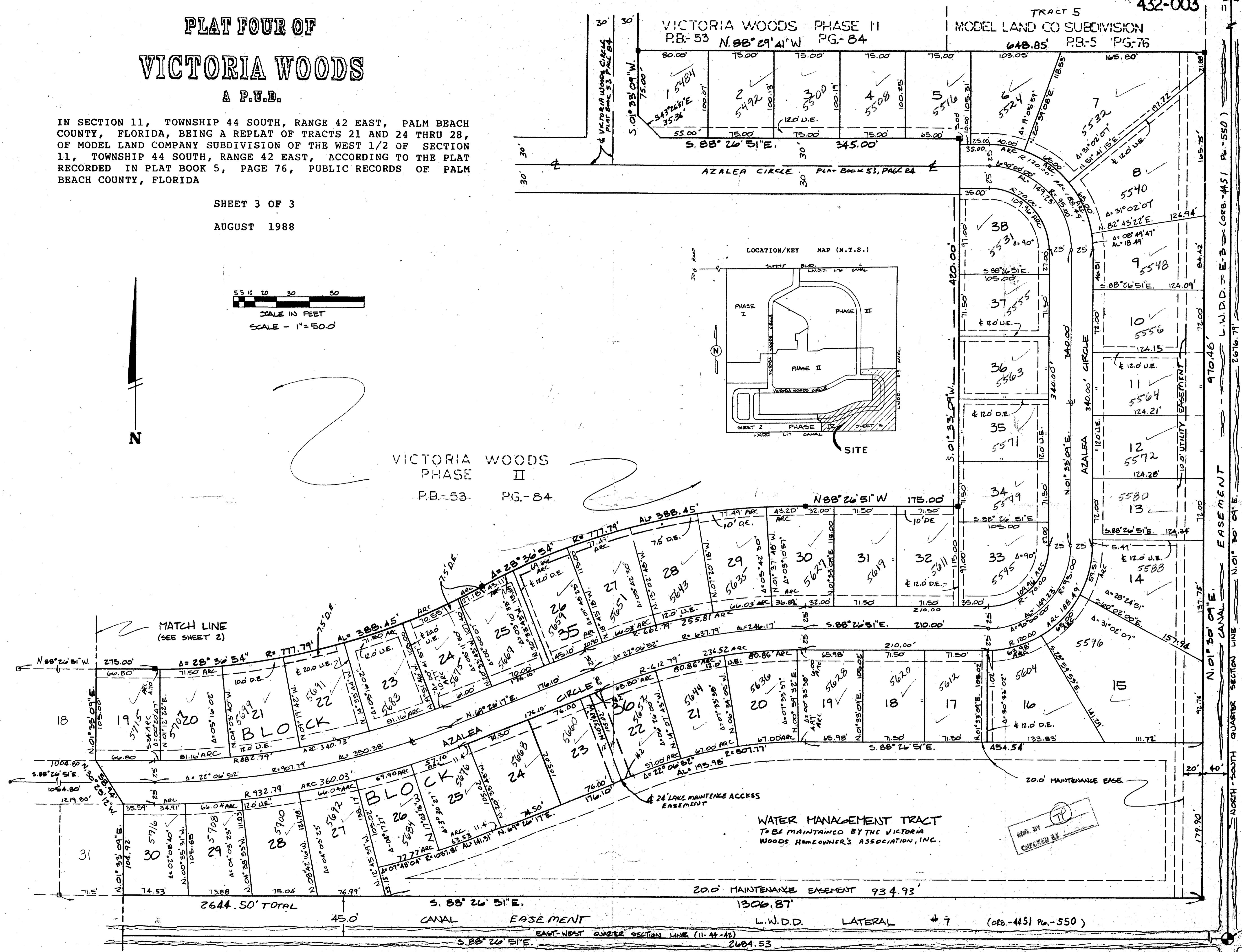
IN SECTION 11, TOWNSHIP 44 SOUTH, RANGE 42 EAST, PALM BEACH COUNTY, FLORIDA, BEING A REPLAT OF TRACTS 21 AND 24 THRU 28, OF MODEL LAND COMPANY SUBDIVISION OF THE WEST 1/2 OF SECTION 11, TOWNSHIP 44 SOUTH, RANGE 42 EAST, ACCORDING TO THE PLAT RECORDED IN PLAT BOOK 5, PAGE 76, PUBLIC RECORDS OF PALM BEACH COUNTY, FLORIDA

SHEET 3 OF 3

AUGUST 1988



VICTORIA WOODS  
PHASE II  
P.B.-53 PG.-84



SUBDIVISION \* Plat Four of Victoria Woods  
BOOK 03 FLOOD MAP # 16.5B  
FLOOD ZONE B ZONING RS-85-153  
QUAD # 32 ZIP CODE 33468  
# 782 285  
PUD NAME Victoria Woods PUD

WATER MANAGEMENT TRACT  
TO BE MAINTAINED BY THE VICTORIA  
WOODS HOMEOWNER'S ASSOCIATION, INC.

ADD BY  
CHECKED BY

0432-003  
Pet. 83-153  
CENTER OF SECTION

PLAT FOUR OF VICTORIA WOODS 63/171